

REVISIONS AND ISSUANCE

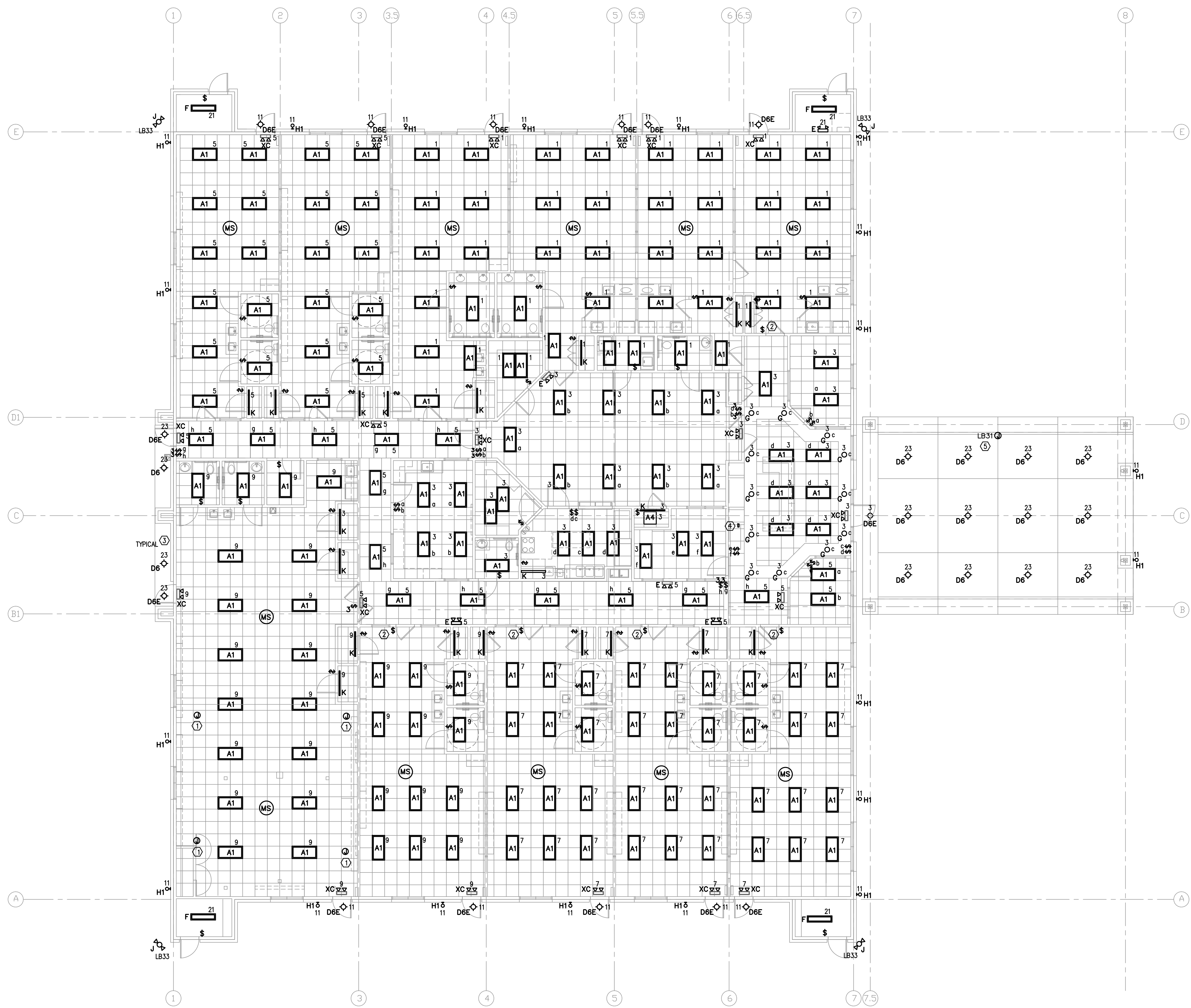
NO.	DATE	DESCRIPTION
08/13/2018		PRICING
08/31/2018		PERMIT
07/28/18		CITY COMMENTS

GENERAL NOTES

- LIGHTING FIXTURE SUBSCRIPTS INDICATE FIXTURE TYPE, CONTROLLING SWITCH AND CIRCUIT NUMBER, IE:
 A_3^1
 A INDICATES FIXTURE TYPE.
 3 INDICATES CIRCUIT NO. 3, PANEL HA
 LB3 INDICATES CIRCUIT NO. 3, PANEL LB
 g INDICATES CONTROLLING SWITCH
- REFER TO E5.0 FOR PANEL SCHEDULES. REFER TO E7.0 FOR LIGHT FIXTURE SCHEDULE.
- PROVIDE UNSWITCHED HOT LEG TO EMERGENCY BATTERY BACKUP SYSTEM.
- (MS) MOTION SENSOR FOR LOCAL ROOM. PASSIVE INFRARED AREA SENSOR; WATTSTOPPER C1-200 WITH 30 MINUTE TIME DELAY.
- MORE EXIT SIGNS AND EMERGENCY LIGHTING MAY BE REQUIRED AT FINALS.

KEYED NOTES

- LOCATION OF SURROUND SOUND SPEAKERS; COORDINATE EXACT LOCATION WITH OWNER PRIOR TO INSTALLATION.
- SWITCH SHALL BE KEYED LOW VOLTAGE, MOMENTARY CONTACT SWITCH (WATTSTOPPER LVS-1K OR PRIOR APPROVED EQUAL). SWITCH SHALL OPERATE AS MANUAL OVERRIDE TO CONNECTED OCCUPANCY SENSOR.
- ROUTE BRANCH CIRCUIT VIA LIGHTING CONTROLLER 'C1'. RE: LIGHTING CONTROLLER DIAGRAM E4.0.
- LIGHTING CONTROLLER OVERRIDE SWITCH.
- LOCATION OF SIGNAGE; COORDINATE EXACT LOCATION WITH OWNER PRIOR TO INSTALLATION.



1 LIGHTING PLAN
 1/8" = 1'-0"

IVY KIDS EARLY LEARNING CENTER
 4434 CR 94
 Manvel, Tx 77578

MEP Consultants
 BLK Engineering & Consulting Co.
 3423 Spring Arbor Ln.
 Sugar Land, TX 77479
 (t) 832 563 3127
 TBPE Firm #12672



DRAWING TITLE
ELECTRICAL LIGHTING PLAN

DRAWN BY FK	CHECKED BY CK
DATE 05/10/2018	JOB NO. SEDONA LAKES
DRAWING NO. E-2.0	