

REVISIONS AND ISSUANCE		
NO.	DATE	DESCRIPTION
08/13/2018		PRICING
08/31/2018		PERMIT

GENERAL NOTES

- REFER TO E4.0 FOR ONE LINE DIAGRAM AND E5.0 FOR PANEL SCHEDULES. REFER TO E7.0 FOR SPECIFICATIONS, NOTES, LIGHTING SCHEDULE, AND SYMBOLS.
- SUBSCRIPT INDICATES CIRCUIT NUMBER, IE:
 ●A3 A3 INDICATES CIRCUIT NO. 3 PANEL 'LA'
 ●B3 INDICATES CIRCUIT NO. 3 PANEL 'LB'
 ●HA3 INDICATES CIRCUIT NO. 3 PANEL 'HA'
- COORDINATE THE INSTALLATION OF THE ELECTRICAL POWER TO THE KITCHEN EQUIPMENT WITH THE ACTUAL EQUIPMENT BEING INSTALLED. PROVIDE CIRCUIT BREAKERS, BRANCH CIRCUIT CONDUCTORS, J-BOXES, RECEPTACLES AND DISCONNECT SWITCHES AS REQUIRED BY THE EQUIPMENT INSTALLATION REQUIREMENTS AND THE NEC.
- PROVIDE GFCI TYPE RECEPTACLES OR CIRCUIT BREAKERS FOR ALL 120V RECEPTACLES IN THE KITCHEN PER THE NEC. COORDINATE RECEPTACLE MOUNTING HEIGHT WITH THE EQUIPMENT BEING INSTALLED.
- PROVIDE LISTED TAMPER-RESISTANT RECEPTACLES PER NEC 406.12(C).
- COORDINATE THE INSTALLATION OF ELECTRICAL RECEPTACLES WITH MILLWORK LOCATION, ARCHITECTURAL INTERIOR ELEVATIONS, ADA REQUIREMENTS, AND SURROUNDING FIELD CONDITIONS.
- ALL RESTROOM EXHAUST FANS SHALL BE INDEPENDENTLY SWITCHED FROM THE RESTROOM LIGHTING.

KEYED NOTES

- RECEPTACLE FOR POWER CONNECTION TO CEILING-MOUNTED PROJECTOR. COORDINATE EXACT LOCATION WITH OWNER PRIOR TO INSTALLATION.
- J-BOX FOR POWER CONNECTION TO THEATER SCREEN. COORDINATE EXACT LOCATION WITH OWNER PRIOR TO INSTALLATION.
- DATA CONNECTION TO CEILING-MOUNTED PROJECTOR. COORDINATE EXACT LOCATION WITH OWNER PRIOR TO INSTALLATION.
- PROVIDE NEMA 14-30R AND CIRCUIT OF 3#10, 1#10G, 3/4" C TO CIRCUIT NOTED FOR CONNECTION TO DRYER.
- ROUTE 1" C WITH PULLSTRING TO ELEC ROOM.
- ROUTE 2-2" C UNDER SLAB TO DESK LOCATION.
- PROVIDE NEMA 14-50R AND CIRCUIT OF #8, #10G, 1" C TO CIRCUIT NOTED FOR CONNECTION TO OVEN/RANGE.
- J-BOX FOR POWER CONNECTION TO FRONT DOOR LOCK, DOOR STRIKE, AND FINGER PRINT DEVICE. COORDINATE EXACT EQUIPMENT REQUIREMENTS WITH OWNER PRIOR TO PURCHASE AND INSTALLATION.
- ROUTE 2-3" C WITH PULLSTRING TO PROPERTY LINE FOR TELEPHONE/CATV UTILITY SERVICE. COORDINATE EXACT ROUTING AND DEMARK POINT WITH SERVICE PROVIDERS.
- POWER FOR FUTURE SITE WATER SYSTEM. COORDINATE EXACT ROUTING AND DEMARK POINT WITH SERVICE PROVIDERS.
- OWNER TO PROVIDE FINAL FURNITURE LAYOUT AND CONFIRM ALL FLOOR OUTLET LOCATIONS PRIOR TO ROUGH-IN.

IVY KIDS EARLY LEARNING CENTER

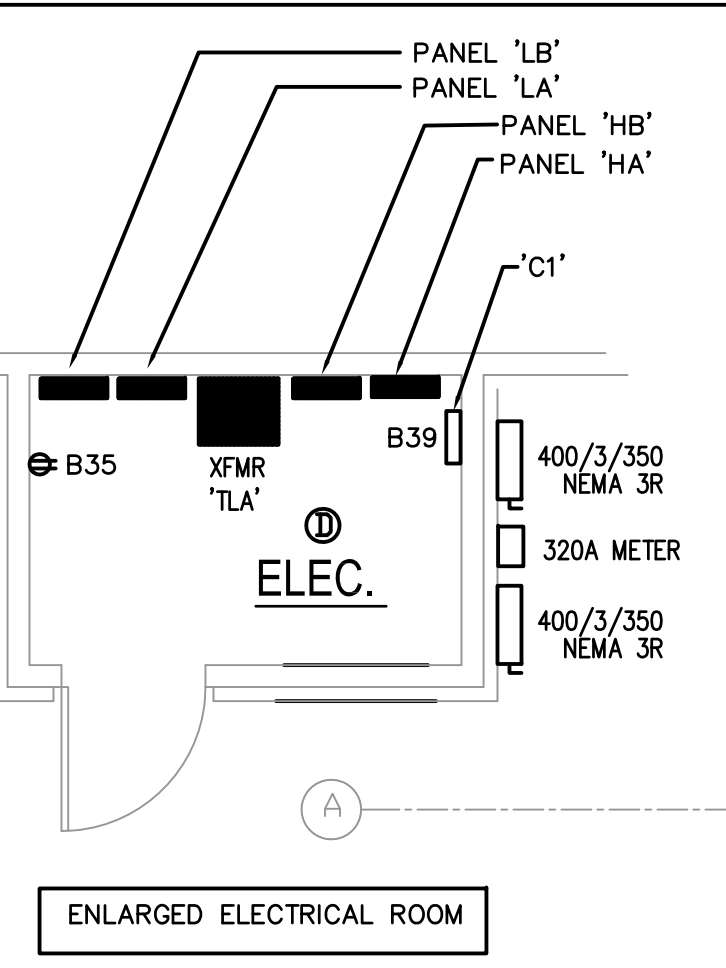
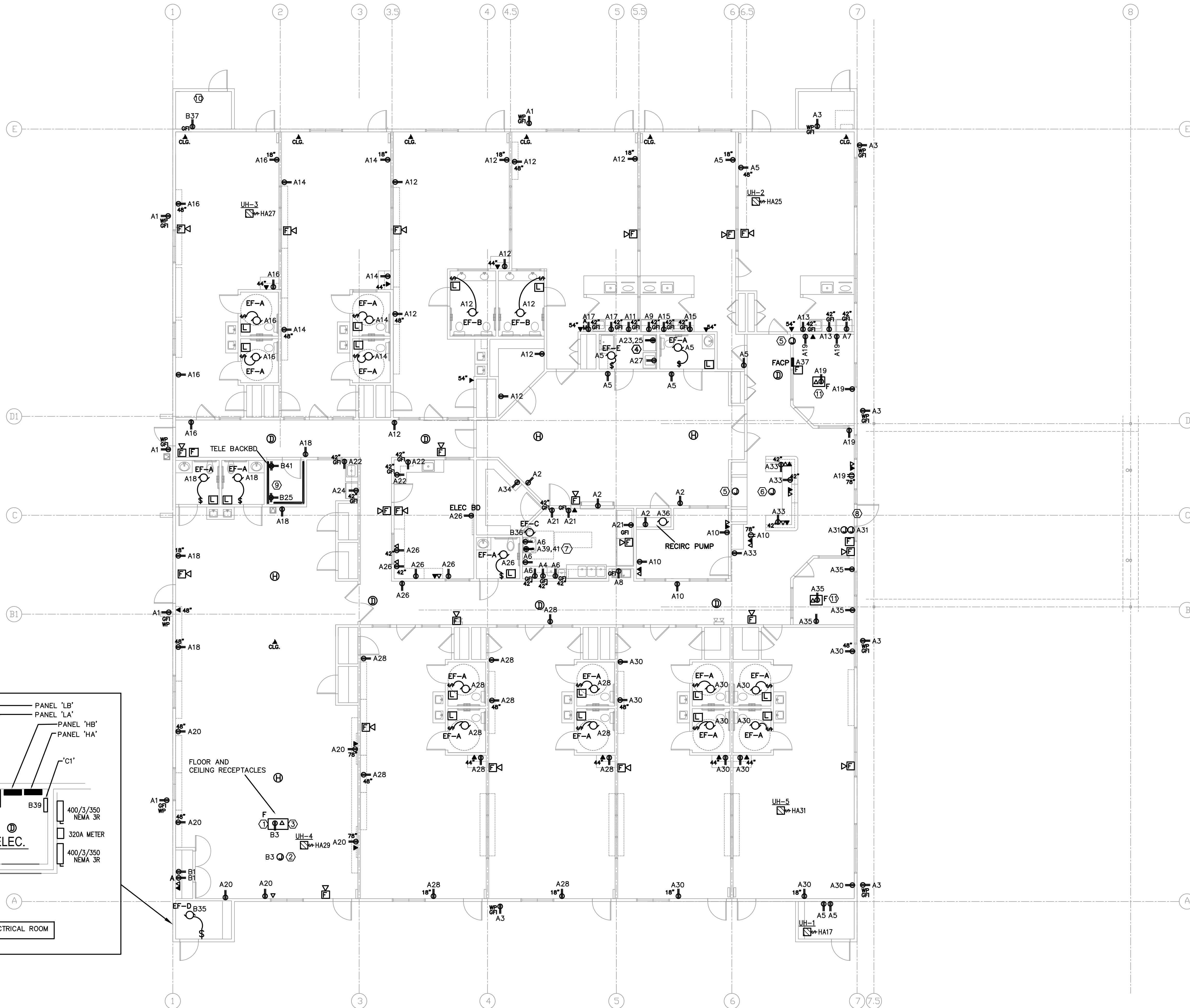
4434 CR 94
 Manvel, Tx 77578

MEP Consultants
 BLK Engineering & Consulting Co.
 3423 Spring Arbor Ln.
 Sugar Land, TX 77479
 (t) 832.563.3127
 TBPPE Firm #12672



THESE DOCUMENTS ARE FOR INTERIM REVIEW AND NOT FOR CONSTRUCTION, BIDDING OR PERMIT PURPOSES.
 RESPONSIBLE ENGINEER:
 CHIH-TAI KENG
 79201
 08-13-2018

DRAWING TITLE	
ELECTRICAL POWER PLAN	
DRAWN BY	CHECKED BY
FK	CK
DATE	JOB NO.
05/10/2018	SEDONA LAKES
DRAWING NO.	E-3.0



1 POWER PLAN
 1/8" = 1'-0"