

GENERAL NOTES

- REFER TO E4.0 FOR ONE LINE DIAGRAM, AND E5.0 FOR PANEL SCHEDULES.
- REFER TO E7.0 FOR GENERAL NOTES AND ELECTRICAL SPECIFICATIONS.
- SUBSCRIPT INDICATES CIRCUIT NUMBER, IE:
 ●HA3 HA3 INDICATES CIRCUIT NO. 3 PANEL 'HA'
- CONTRACTOR SHALL COORDINATE THE LOCATION OF PROPOSED TRANSFORMER POLE WITH CNP PRIOR TO START OF CONSTRUCTION.
- PROVIDE PULL WIRES IN SPARE CONDUITS.
- CONTRACTOR SHALL PROVIDE PHOTOMETRIC CALCULATIONS AND DRAWING DOCUMENTATION TO BE SUBMITTED WITH SITE LIGHTING FIXTURE CUT SHEETS FOR ARC APPROVAL BEFORE INSTALLATION.

KEYED NOTES

- PROPOSED NEW TRANSFORMER POLE LOCATION.
- PROVIDE UNDERGROUND SERVICE ENTRANCE CONDUCTORS; RE: E4.0 FOR SIZES AND QUANTITIES.
- PROVIDE SERVICE DISCONNECTS, METER AND ASSOCIATED CONDUITS AND CONDUCTORS; RE: E4.0 FOR SIZES.
- PROVIDE TWO 3" SCHEDULE 40 PVC CONDUITS FOR COMMUNICATION CABLES WITH PULL WIRES TO TELEPHONE ROOM. COORDINATE LOCATIONS WITH PROVIDERS.
- PROVIDE TWO 120V BRANCH CIRCUITS AND 1-1/2" EMPTY CONDUIT WITH PULL WIRE FOR COMMUNICATION TO DIGITAL SIGN.
- ROUTE LIGHTING BRANCH CIRCUITS VIA LIGHTING CONTROLLER 'CI'; RE: LIGHTING CONTROLLER DIAGRAM 02/E4.0 FOR DETAILS.

A. U. I. I. S
(HARRIS) S
A B S T R A

REVISIONS AND ISSUANCE		
NO.	DATE	DESCRIPTION
08/13/2018		PRICING
08/31/2018		PERMIT

IVY KIDS EARLY LEARNING CENTER
 4434 CR 94
 Manvel, Tx 77578

MEP Consultants
 BLK Engineering & Consulting Co.
 3423 Spring Arbor Ln.
 Sugar Land, TX 77479
 (1) 832 563 3127
 TBPE Firm #12672



DRAWING TITLE
ELECTRICAL SITE PLAN

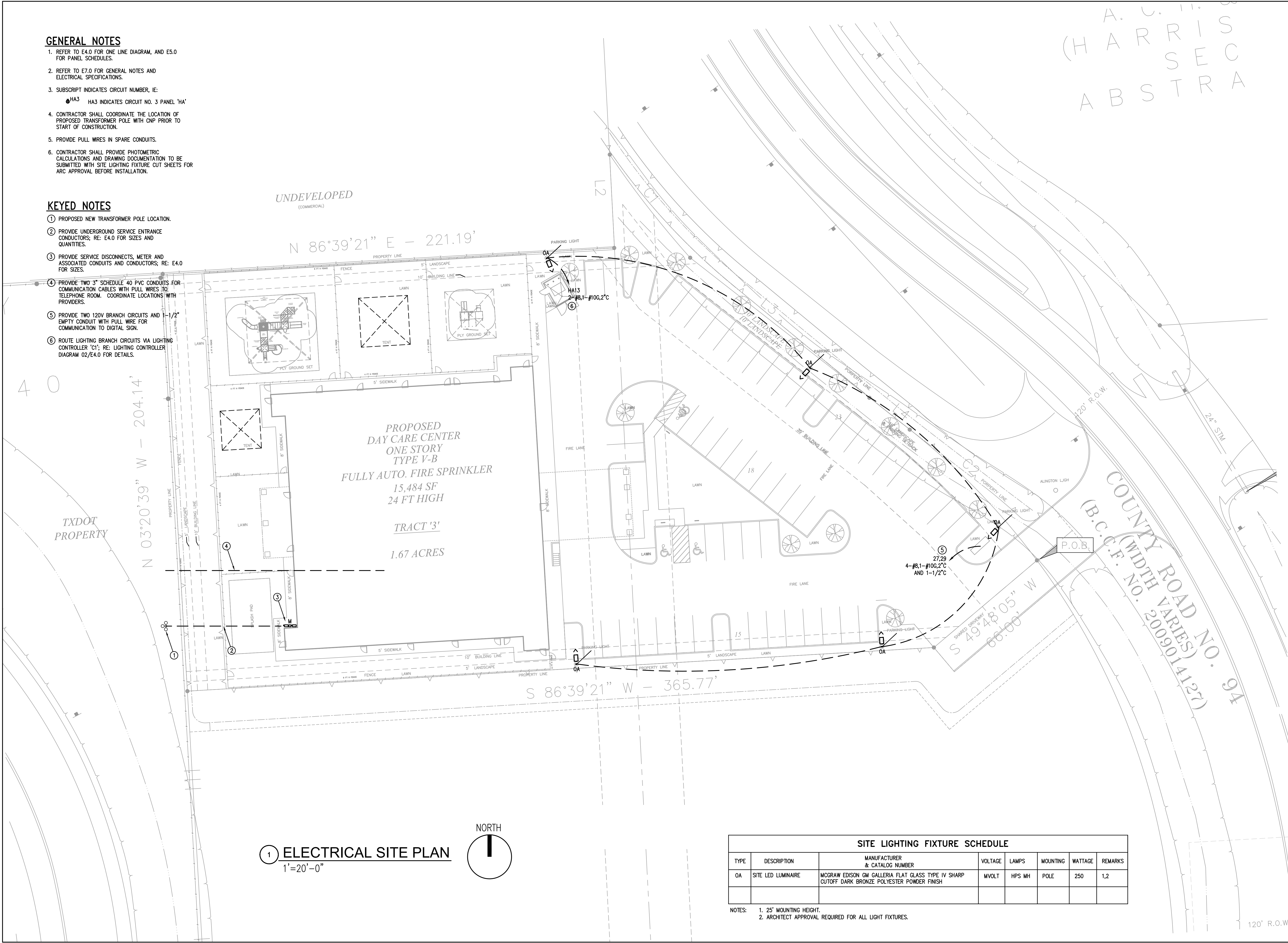
DRAWN BY
 FK

CHECKED BY
 CK

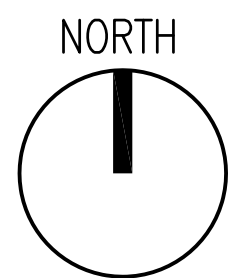
DATE
 05/10/2018

JOB NO.
 SEDONA LAKES

DRAWING NO.
E1.0



1 ELECTRICAL SITE PLAN
 1"=20'-0"



SITE LIGHTING FIXTURE SCHEDULE							
TYPE	DESCRIPTION	MANUFACTURER & CATALOG NUMBER	VOLTAGE	LAMPS	MOUNTING	WATTAGE	REMARKS
OA	SITE LED LUMINAIRE	MCGRAW EDISON GM GALLERIA FLAT GLASS TYPE IV SHARP CUTOFF DARK BRONZE POLYESTER POWDER FINISH	MVOLT	HPS MH	POLE	250	1,2

- NOTES:
 1. 25' MOUNTING HEIGHT.
 2. ARCHITECT APPROVAL REQUIRED FOR ALL LIGHT FIXTURES.

120' R.O.W.