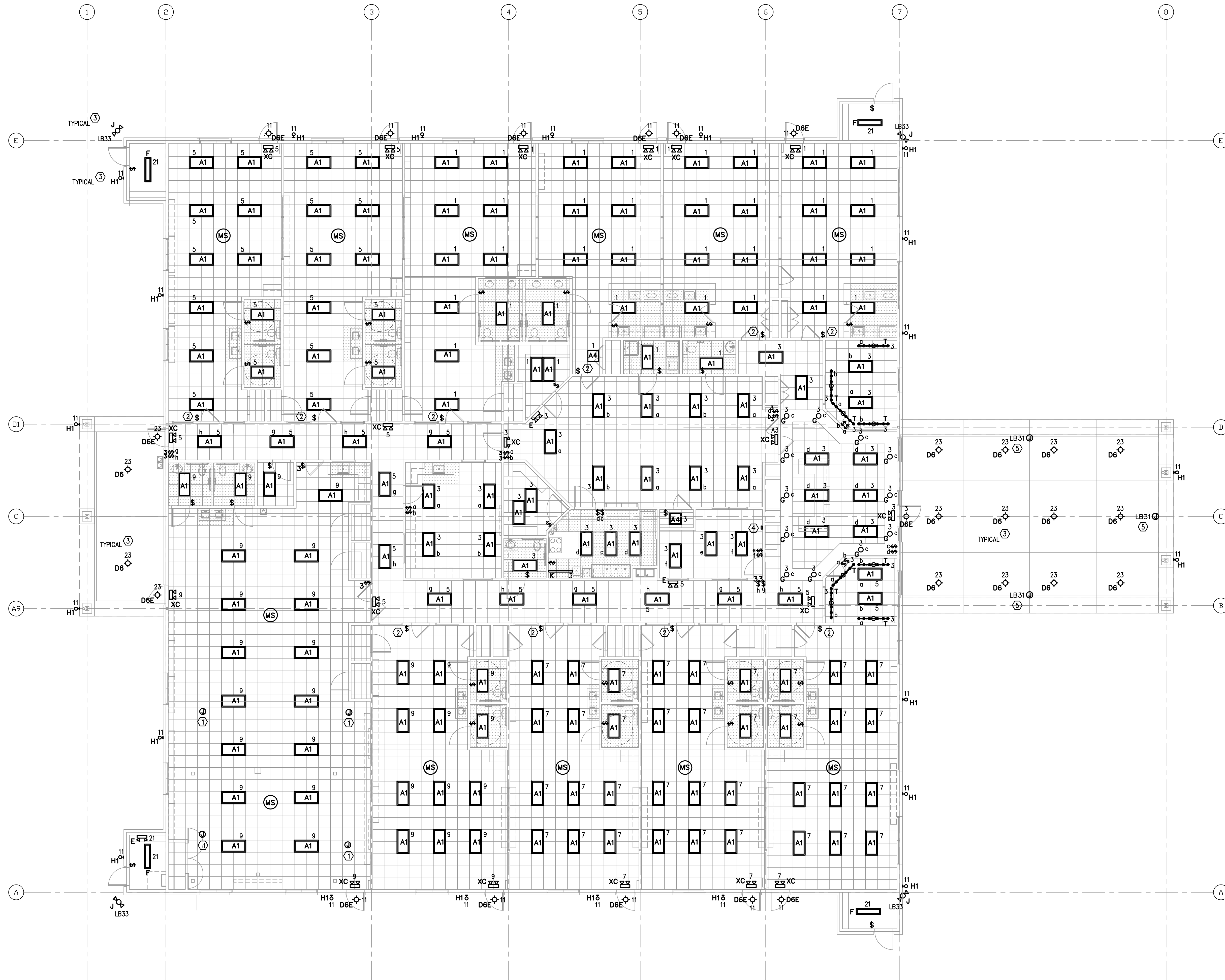


GENERAL NOTES

- LIGHTING FIXTURE SUBSCRIPTS INDICATE FIXTURE TYPE, CONTROLLING SWITCH AND CIRCUIT NUMBER.
IE: A_3^5 A INDICATES FIXTURE TYPE.
3 INDICATES CIRCUIT NO. 3, PANEL HA
5 INDICATES CIRCUIT NO. 3, PANEL LB
o INDICATES CONTROLLING SWITCH
- REFER TO E5.0 FOR PANEL SCHEDULES. REFER TO E7.0 FOR LIGHT FIXTURE SCHEDULE.
- PROVIDE UNSWITCHED HOT LEG TO EMERGENCY BATTERY BACKUP SYSTEM.
- (MS) MOTION SENSOR FOR LOCAL ROOM.
PASSIVE INFRARED AREA SENSOR; WATTSTOPPER C1-200 WITH 30 MINUTE TIME DELAY.
- MORE EXIT SIGNS AND EMERGENCY LIGHTING MAY BE REQUIRED AT FINALS.

KEYED NOTES

- LOCATION OF SURROUND SOUND SPEAKERS; COORDINATE EXACT LOCATION WITH OWNER PRIOR TO INSTALLATION.
- SWITCH SHALL BE KEYED LOW VOLTAGE, MOMENTARY CONTACT SWITCH (WATTSTOPPER LVS-1K OR PRIOR APPROVED EQUAL). SWITCH SHALL OPERATE AS MANUAL OVERRIDE TO CONNECTED OCCUPANCY SENSOR.
- ROUTE BRANCH CIRCUIT VIA LIGHTING CONTROLLER 'C1'. RE: LIGHTING CONTROLLER DIAGRAM E4.0.
- LIGHTING CONTROLLER OVERRIDE SWITCH.
- LOCATION OF SIGNAGE; COORDINATE EXACT LOCATION WITH OWNER PRIOR TO INSTALLATION.

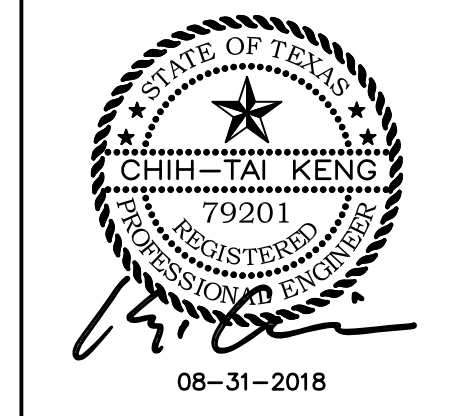


1 LIGHTING PLAN
1/8" = 1'-0"

REVISIONS AND ISSUANCE		
NO.	DATE	DESCRIPTION
08/13/2018		PRICING
08/31/2018		PERMIT

IVY KIDS EARLY LEARNING CENTER
4434 CR 94
Manvel, Tx 77578

MEP Consultants
BLK Engineering & Consulting Co.
3423 Spring Arbor Ln.
Sugar Land, TX 77479
(t) 832 563 3127
TBPE Firm #12672



DRAWING TITLE
ELECTRICAL LIGHTING PLAN

DRAWN BY FK	CHECKED BY CK
DATE 05/10/2018	JOB NO. SEDONA LAKES
DRAWING NO. E-2.0	