

REVISIONS AND ISSUANCE		
NO.	DATE	DESCRIPTION
1	08/13/2017	PRICING
2	08/30/2018	ADDENDUM 1

PLEASE SEE SHEET A-2.4 FOR NSF INFORMATION OF THE PROPOSED KITCHEN EQUIPMENT

**Partial Finish Schedule for health related items , (see A-01 for a complete schedule)**

	Floor	Base/Trim	Wall	Ceiling	Remarks
01 ENTRY	FRP	FRP	FRP	FRP	floor and ctp to be selected
02 OFFICE	FRP	FRP	FRP	FRP	NDT USED
03 OFFICE	FRP	FRP	FRP	FRP	8'-6"
04 DIRECTORS OFFICE	FRP	FRP	FRP	FRP	8'-6"
04A SICK ROOM	FRP	FRP	FRP	FRP	8'-6"
05 KITCHEN	FRP	FRP	FRP	FRP	VINYL FACED CLG TILE
06 RESTROOM	FRP	FRP	FRP	FRP	8'-6" FRP UP TO 4' HT.
07 PANTRY	FRP	FRP	FRP	FRP	8'-6"
08 LUNCH ROOM	FRP	FRP	FRP	FRP	8'-6" FRP UP TO 4' HT.
09 STORAGE	FRP	FRP	FRP	FRP	8'-6" FRP UP TO 4' HT.
10 UTILITY	FRP	FRP	FRP	FRP	8'-6" FRP UP TO 4' HT.
11 RESTROOM	FRP	FRP	FRP	FRP	8'-6" FRP UP TO 4' HT.
12 STORAGE	FRP	FRP	FRP	FRP	8'-6"

COLOR OF ALL FRP AND CEILING ARE WHITE  
 ALL FLOOR, WALL, BASE AND WALL FINISH IN KITCHEN(05), PANTRY(07), LUNCH (08), STORAGE (09), UTILITY (10) RESTROOM(11) SHALL BE LIGHT BEIGE AND HAVE LRV OF 40 OR GREATER.

**HEALTH NOTE:**  
 ALL NSF CERTIFICATION ARE SHOWN ON A2.4

- PROVIDE FRP AND WAINSCOTING AT CORRIDORS
- ALL INTERIOR WALL EXTEND TO BOTTOM OF TRUSS
- INSULATION ON ALL EXTERIOR WALL

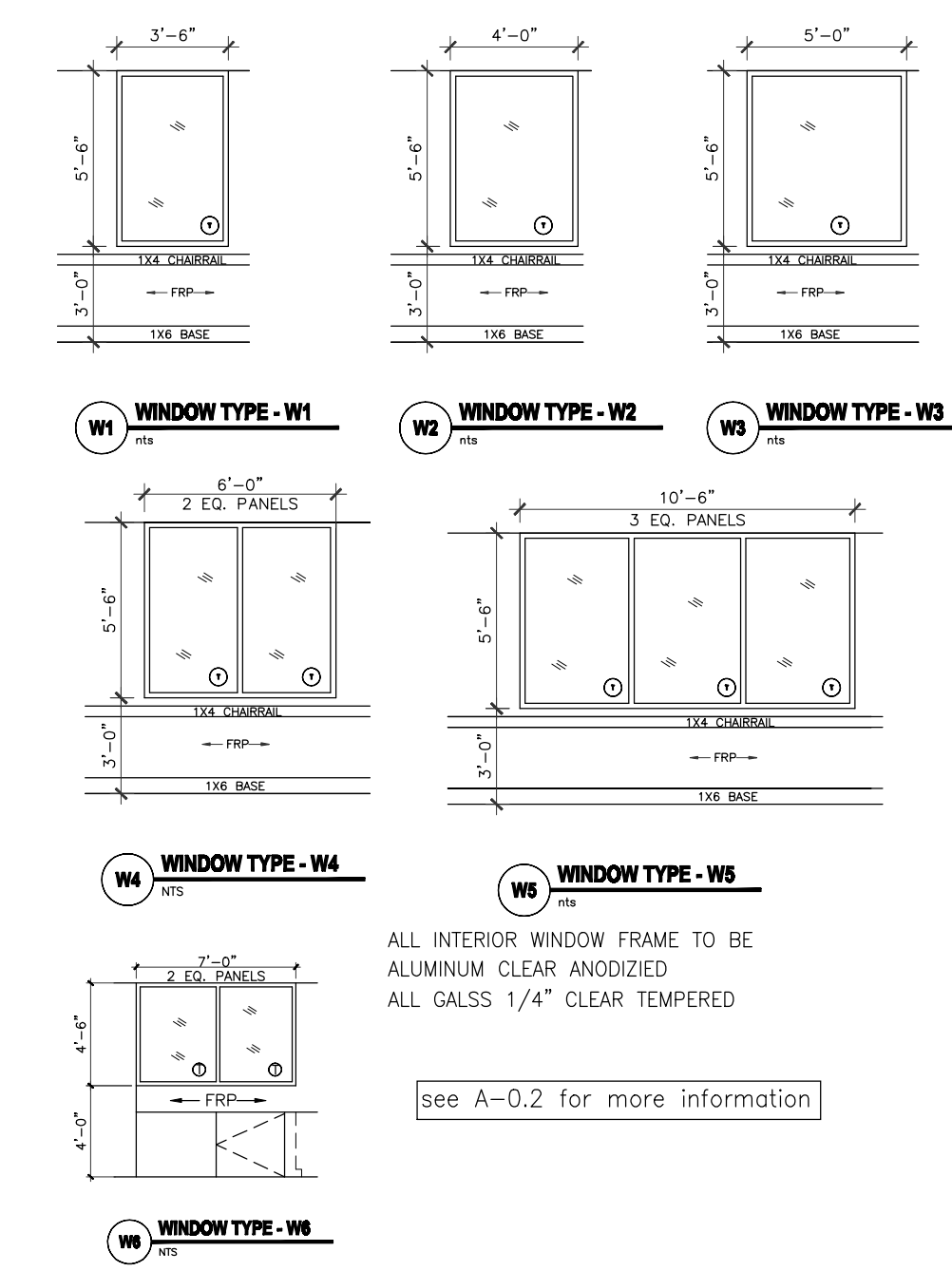
GC NOTES:  
 ALL ADA RAILING, REST ROOM ACCESSORIES, SHALL BE INSTALLED AFTER ADA INSPECTOR MARKED THE REQUIRED HEIGHT AT SITE.

**NOTE:**  
 MOISTURE RESISTANT PLYWOOD SUBSTRATE SHALL BE USED AT ALL AREA RECEIVE PLUMBING FIXTURE. PRESS WOOD IS ALLOWED ONLY AT DRY AREA.

**LEGEND**

- ROOM NAME
- VCT FLOOR FINISH
- MILLWORK CUBBIE, SEE SHEET 6.8
- DOOR NUMBER, SEE SHEET A0.1
- 2x6 WOOD STUD
- EGRESS PATH PLAN
- MIRROR NOT SHOWN ON PLAN, SEE ENLARGED ELEVATIONS
- TB TACK BOARD, BY CLARIDGE, 24"WX18"H, TOTAL OF 13. ALUM. FRAME WITH LIGHT COLOR CORK.

**INTERIOR WINDOW SCHEDULE**



**EXTERIOR WINDOW SCHEDULE**

DARK BRONZE ANODIZED ALUMINUM WINDOW FIXED WITH GLAZED-IN INSULATING UNITS, SEE PLAN AND ELEVATION FOR SIZE STAINED CLEAR PINE INTERIOR SURROUNDING.

See A-3.0 for more information

**IVY KIDS EARLY LEARNING CENTER**  
**4434 CR 94**  
**Manvel, Tx 77578**



DRAWING TITLE  
**FLOOR PLAN**

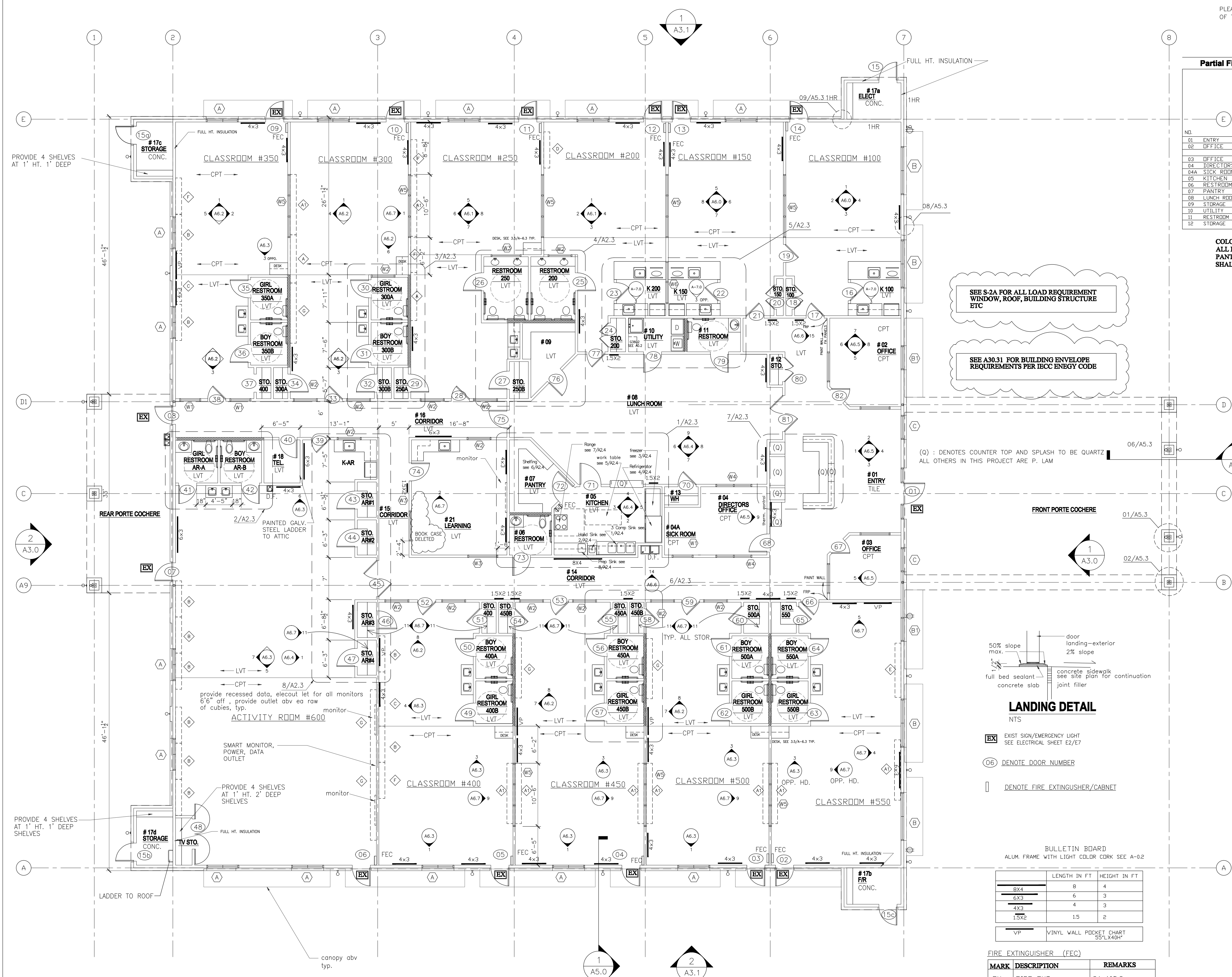
DRAWN BY  
 JC

CHECKED BY  
 JC

DATE  
 03/30/2017

JOB NO.  
 gleannloch

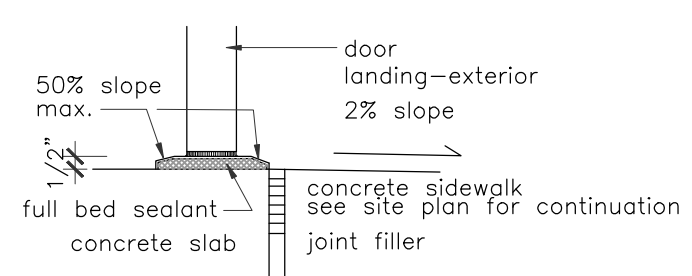
DRAWING NO.  
**A-2.0**



SEE S-2A FOR ALL LOAD REQUIREMENT WINDOW, ROOF, BUILDING STRUCTURE ETC

SEE A30.31 FOR BUILDING ENVELOPE REQUIREMENTS PER IECC ENERGY CODE

(Q) : DENOTES COUNTER TOP AND SPLASH TO BE QUARTZ  
 ALL OTHERS IN THIS PROJECT ARE P. LAM



**LANDING DETAIL**

- EXIST SIGN/EMERGENCY LIGHT SEE ELECTRICAL SHEET E2/E7
- 06 DENOTE DOOR NUMBER
- DENOTE FIRE EXTINGUISHER/CABINET

BULLETIN BOARD  
 ALUM. FRAME WITH LIGHT COLOR CORK SEE A-0.2

	LENGTH IN FT	HEIGHT IN FT
8X4	8	4
6X3	6	3
4X2	4	3
15X2	1.5	2
VP	VINYL WALL POCKET CHART 55"LX40"H	

FIRE EXTINGUISHER (FEC)

MARK	DESCRIPTION	REMARKS
FX	FIRE EXT.	2A-10B/C
FX-K	FIRE EXT.-KITCHEN	K-RATED

PLUS RECESSED FE CABINETS.

INTERIOR WALL AND CEILING FINISH REQUIREMENT BY OCCUPANCY

GROUP	EXIT PASSAGEWAY	CORRIDOR	ROOM AND ENCLOSED SPACES
E	B	C	C

- NOTES:**
- BUILDING IS FULLY SPRINKLERED.
  - ALL INTERIOR WALL 2X4 STUDS U.N.O. ALL EXTERIOR WALL 2x6 STUDS
  - 2X6 FOR PLUMBING WALL.
  - ALL BATHROOMS TO BE SLOPED TO FLOOR DRAIN. (SEE P-1)
  - VISUAL ALARM SHALL BE PROVIDED WITH AUDIBLE ALARM IN ALL RESTROOMS, CLASSROOMS, ACTIVITY ROOM, LOBBIES, AND HALLWAYS.
  - THE FRONT DOOR HAS AN ELECTRONIC DOOR LATCH, COMPLETE W/ "BIOMETRIC BASED SAFEPASS DOOR CONTROLLER". THE ELECTRONIC DOOR LATCH SHOULD BE ABLE TO BE OPERATED BY A BUZZER BUTTON FROM INSIDE THE BLDG. FROM RECEPTION DESK, AND W/ A KEY IN THE FRONT
  - ALL LOCKS KEYS TO HAVE THE SAME MASTER KEY
  - TACK BOARDS PROVIDED BY GC.
  - PLACE THERMOSTAD SENSOR NEAR 6 FT AFF.
  - TO AVOID CONFLICT, COORDINATION WITH MILLWORK, FURNITURE, WIDOWS, DOORS AND ALL OTHER EQUIPMENT, DEVICES MUST BE DONE PRIOR TO LOCATE THE WALL SWITCH AND/OR OUTLETS. GC IS RESPONSIBLE TO FIX THE FILED CONFLICT SHOULD IT OCCURS.

**1 FLOOR PLAN**  
 1/8" = 1'-0"